

Product datasheet

Specifications



Fast charging station, EVlink Pro DC, 60kW wallbox, CCS2 + CHAdeMO connectors, 5m cable with cable management system

EVD1S60THB

EAN Code: 3606482455450

Main

Range	EVlink
Product name	EVlink Pro DC
product or component type	Fast charging station
Type of installation	Indoor/outdoor
Poles description	3P + N + E

Complementary

Range compatibility	EVlink EVlink Field Services EVlink EVlink Load Management System
Device application	Electrical Vehicle charger
Mounting location	Wall mounting Floor stand with pedestal (to be ordered separately)
Earthing system	TN-S TN-C-S TT Compatible IT with additional isolation transformer on the power supply
[Us] rated supply voltage	380...415 V AC at 50 Hz, 3 phases + neutral
Input current	97...107 A
Nominal output power	SAE CCS Combo 2: 60 kW at 1.5...200 A, 150...1000 V, DC CHAdeMO: 60 kW at 1.5...125 A, 150...500 V, DC
Output type	Left side: 1 charging cable of 5 m Right side: 1 charging cable of 4.5 m
number of outputs	2
Connector type	SAE CCS Combo 2 CHAdeMO
Provided equipment	1 meter display per output cable management system
Protection type	Short-circuit protection on output Overload protection Ground fault protection Residual current breaker with overcurrent protection (RCBO) Temperature rise protection
Access control system	Badge RFID conforming to ISO/IEC 14443 A and B Badge NFC
Display type	LCD touch screen : 7 inch

Disclaimer: This documentation is not intended as a substitute for and is not to be used for determining suitability or reliability of these products for specific user applications

Main user language (constantly evolving)	Danish Dutch English French German Norwegian Spanish
Control button type	Charge interruption button
Material	Enclosure: stainless steel 304 Aluminium
Colour	Front face: signal white (RAL 9003) Body: black (Pantone black C)
Efficiency	95 %
Power factor	0.99
Ambient air temperature for operation	-30...50 °C (with derating above 50 °C)
Height	1204 mm
Width	1303 mm
Depth	339 mm
Net weight	131 kg (without power module) 161 kg (with power module)
Services	Commercial service plan Commissioning service Warranty extension up to 5 years Repair service
Ethernet service	Web browser
Communication port protocol	OCPP 1.6
Communication network type	4G WLAN TCP/IP Wi-Fi

Environment

Electromagnetic compatibility	Immunity for industrial environments: Emission standard for industrial environments:
IP degree of protection	IP55
IK degree of protection	IK10 Screen: IK08
ambient air temperature for storage	-40...70 °C
Operating altitude	0...2000 m
Relative humidity	5...95 %, without condensation
Standards	IEC 61851-1:ed. 3 IEC 61851-23:ed. 1 IEC 62196-1 IEC 62196-3 EN/IEC 61000-6-2:2005 EN/IEC 61000-6-4:class A ISO 15118 DIN 70121
Atmospheric-corrosivity category	C3

Packing Units

Unit Type of Package 1	PCE
Number of Units in Package 1	1

Package 1 Height	77 cm
Package 1 Width	125 cm
Package 1 Length	110 cm
Package 1 Weight	221 kg

Contractual warranty

Warranty

Sustainability

Green Premium™ label is Schneider Electric's commitment to delivering products with best-in-class environmental performance. Green Premium promises compliance with the latest regulations, transparency on environmental impacts, as well as circular and low-CO₂ products.

Guide to assessing product sustainability is a white paper that clarifies global eco-label standards and how to interpret environmental declarations.

[Learn more about Green Premium >](#)

[Guide to assess a product's sustainability >](#)



Transparency RoHS/REACH

Well-being performance

Mercury Free

RoHS Exemption Information Yes

Certifications & Standards

Reach Regulation [REACH Declaration](#)

Eu RoHS Directive Compliant with Exemptions

China RoHS Regulation [China RoHS declaration](#)
Product out of China RoHS scope. Substance declaration for your information

Environmental Disclosure [Product Environmental Profile](#)

Weee The product must be disposed on European Union markets following specific waste collection and never end up in rubbish bins

Circularity Profile [End of Life Information](#)

Technical Illustration

Dimensions

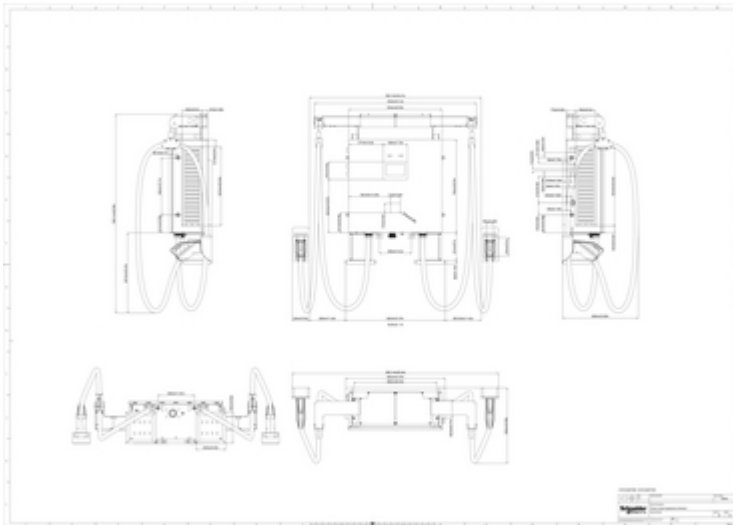


Image of product in real life situation

